



台州三屹精工机电有限公司

TAIZHOU SANSEIKO MECHANICAL & ELECTRICAL CO.,LTD.

地址：浙江省台州市椒江区滨海工业区海丰路2229号

ADD:NO.2229 HAIFENG RD,BINHAI JIAOJIANG TAIZHOU ZHEJIANG CHINA

TEL : 0086-576-88818882

FAX : 0086-576-88128822

E-Mail: wang@sanseikolaser.com

www.sanseikolaser.com



台州三屹精工机电有限公司
TAIZHOU SANSEIKO MECHANICAL & ELECTRICAL CO.,LTD.



COMPANY

>> > INTRODUCTION
企业简介



SMART CUTTING & SOLUTIONS 智慧切割及解决方案



TAIZHOU SANSEIKO MECHANICAL & ELECTRICAL CO.,LTD. has been manufacturing laser machines since 2007. The Company has its own outstanding product development team comprising of professional engineers and research technologists with a long industry experience. We have a wide range of products which are widely applied in garment, leather, label, crafts, sign making, printing and packing, hardware, electronics and other industries.

Our products have been approved by CE safety authentication and the aspect of measuring authentication.

The production is sold to more than 30 countries worldwide and many other regions around the globe. sales closely, service closely. Service is the pursuit of SANSEIKO forever. Customers purchase with confidence due to our unique and innovative designs. Each machine is produced in house by qualified technicians and well trained staff to serve your needs. And ever since 2010, the sales amount of SANSEIKO is increase year by year in global sales with the absolute advantage of small & medium power laser cutting machine. Especial for Europe, India, Brasil, Mexico and Colombia market. As well as domestic market.



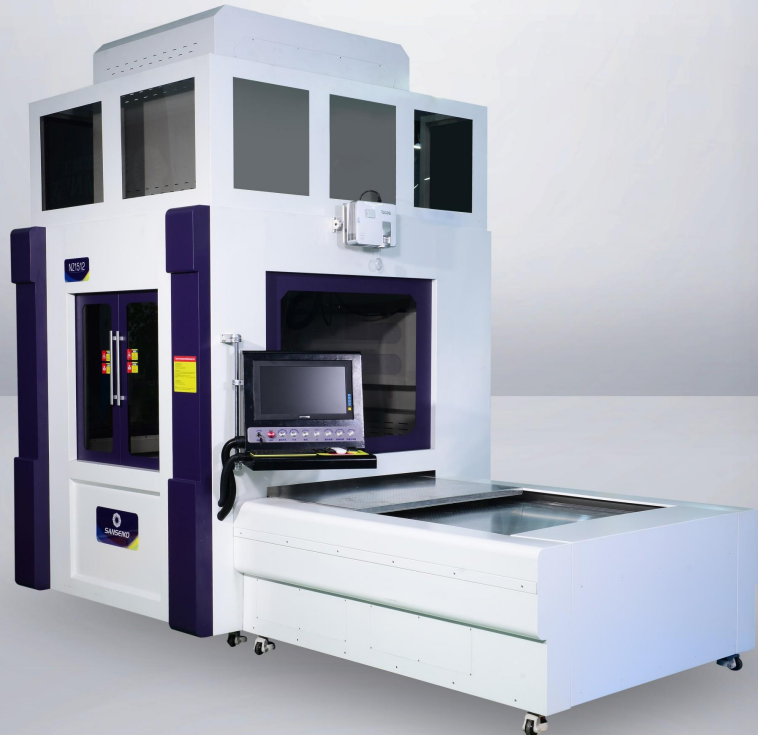


SANSEIKO
三屹精工

NZ350-3D

牛仔激光打标机

Denim Laser Engraving Machine-Laser Washing Series



SANSEIKO
三屹精工

SMART CUTTING & SOLUTIONS
智慧切割及解决方案

技术特征 Technical Parameters

机器型号 Model	NZ350-3D
激光器/Laser Type	美国进口相干 Coherent 350W
工作范围/Working Area	1500*1200mm
激打标速度/Marking Speed	0-7000mm/s
支持文件 Supported File	PLT, AI, BMP, DXF, SHX, TTF
制图软件 Compatible Software	Photoshop, Coreldraw, Autocad,
总功率 / Power	≥12kw (不含辅机)
工作温度 / Working Temperature	10°C - 35°C
工作湿度 / Humidity	5%-65% (不结露 Non-Condensing)
动态聚焦镜头 Dynamic focusing lens	美国贰陆 II-VI INFRARED
动态移动电机 Dynamic moving motor	瑞士进口 Switzerland
直线导轨 linear guide rail	日本HTK
伺服电机 servo motor	日本松下 Panasonic
最小线宽/Line Width(Min)	0.6mm
最小字符/Min Character	1.8mm
电源 Power	AC 220V±10%, 50 / 60Hz

产品特点 Product Features

激光“洗水”在牛仔行业是一种新型无污染、高效节能的激光技术应用。这种工艺可以产生不规则、3D效果的图案，更可以替代传统的喷砂、手擦等手工工艺。通过激光光速对牛仔材料表面的扫描方式，加工出预先设置好的高品质洗水图案，整个过程无污染、无噪音。此应用解决了传统水洗牛仔高能耗，重污染，低产能及材料浪费等的一系列问题。是牛仔洗水行业的最佳选择。

Laser "washing" is an innovated laser technology application in the denim "washing" field. It is efficient, energy-saving and pollution-free. Irregular and 3D patterns can be produced under this technology. Moreover, it can even take the place of the traditional sand blasting or hand brushing. The designed images are created on the surface of the denim material when laser sweeps on the surface of the material. The whole process is noisy-free and environmental friendly. This application solves a series of problems that the traditional denim water washing has, including heavy labor cost, complicated working procedure, heavy pollution and material waste and so on. It is the best choice for denim and jeans products processing industry.



1-高品质美国原装进口激光器

Imported raylase three-axis dynamic galvanometer

使用寿命：无限。该激光器为可充气式，当内部CO2使用完，只需对该激光器加灌CO2气体，即可继续使用，无需更换激光器。

Working life: unlimited. This type of laser device is inflated with CO2. Users merely need to inject CO2 when it is used up. There is no need to change the laser tube.

2-高清投影定位系统：精确预定面料加工位置，避免浪费

High-definition projection and positioning system: Positioning precisely on the material to avoid the waste.

3-交替式工作平台：节省工人放料时间，提高效率。

Double-Alternating Platform: Saving labor cost and material inputting time, and increasing efficiency.

4-友好而人性化操作系统，简单易学。

User-friendly operating interface

应用行业 Applicable Industry

纺织、成衣、皮革、地毯、制鞋等行业的柔性面料激光雕花、牛仔服装激光雕花、鞋面激光烧花、皮革镂空、鞋材激光打标等需求。

Textile, garments, leather, carpets, footwear and other industries of flexible fabric laser carving, denim clothing laser carved, vamps lacquered flowers, leather hollow, shoe laser marking and other needs.

适用于材料 Material & Application

牛仔布、皮革、合成革、木料、纸板、亚克力等非金属材料。

Denim, jeans, leather, synthetic leather, wood, paper, acrylic and non-metal material.

台州三屹精工机电有限公司

Taizhou Sanseiko Mechanical & Electrical Co., Ltd.

地址：浙江省台州市椒江区滨海工业区海丰路2229号 ADD: NO. 2229 HAIFENG RD, BINHAI JIAOJIANG TAIZHOU ZHEJIANG CHINA

TEL: 0086-576-88818882 FAX: 0086-576-88128822 E-Mail: wang@sanseikolaser.com www.sanseikolaser.com



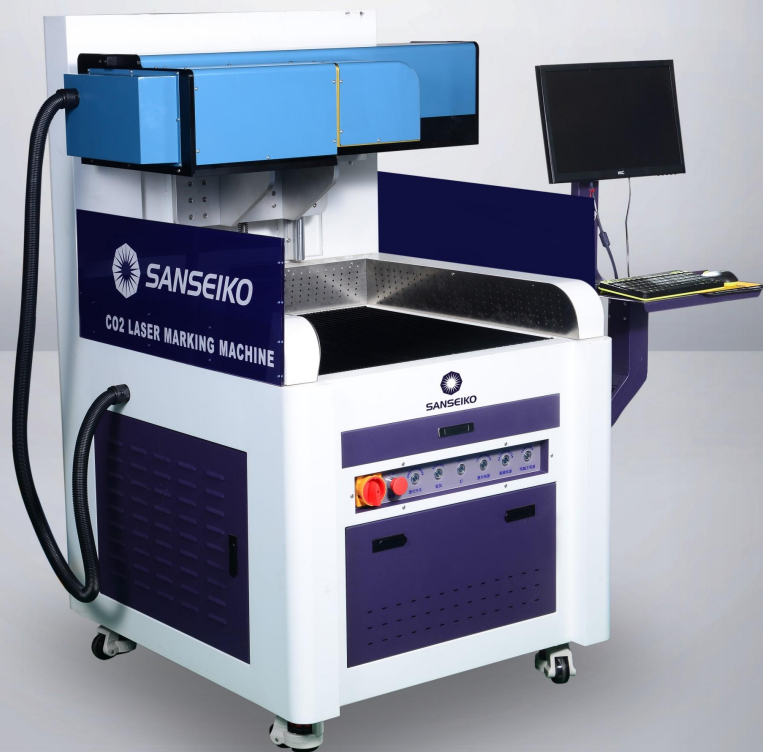
Facebook



X60-3D

皮革打标机

3D Dynamic CO2 Laser Marking



SMART CUTTING & SOLUTIONS
智慧切割及解决方案

技术特征 Technical Parameters

机器型号 Model	X60-3D
标刻范围 Marking Area	600*600mm
激光功率 Laser Power	260W
扫描速度 Marking Speed	0-9000 mm/s
扫描精度 Marking precision	±0.1mm
最小线宽 Min line Width	0.17mm
重复定位精度 Repeat position accuracy	±0.02mm
支持文件 Support file formats	PLT, AI, DXF, DST, BMP, GIF, JPG, TIF
电源 Power Supply	AC220V±10%, 50/60HZ

适用于材料 Material & Application

皮革、布料、木制品、竹制品、塑料、橡胶、亚克力、大理石、水晶、玉石、金属表面、氧化层等。
Leather, Denim, cloth, wooden products, bamboo, plastic, acrylic, marble, crystal, jade, metal surface, oxide coating etc.

应用行业 Applicable Industry

服装、皮革制品、工艺礼品、包装、广告等行业。
Garment, leather, cloth toys, arts and crafts, advertising, decoration, packaging print and so on.

产品特点 Product Features

- 1- 机器低功率消耗，节省省电；
Less power consumption.
- 2- 体积小，方便转运
Small size, air-cooled, easy to carry and transport.
- 3- 采用进口射频激光器，光斑质量好，光功率输出密度均匀、功率稳定。
Adopt imported laser tube. Excellent laser beam. Formed beam is even in density and stable in power.
- 4- 数字式高速扫描振镜：体积小，速度快，稳定性好，性能优异。
High speed digital scanning head: small volume, operate fast, favorable stability and excellent performance.
- 5- 高光电转换率，免维护。
High electro-optical conversion rate, maintenance free.
- 6- 可根据客户需求定制。
Can be customized according to customer demand.



台州三屹精工机电有限公司

Taizhou Sanseiko Mechanical & Electrical Co., Ltd.

地址：浙江省台州市椒江区滨海工业区海丰路2229号 ADD: NO.2229 HAIFENG RD, BINHAI JIAOJIANG TAIZHOU ZHEJIANG CHINA
TEL: 0086-576-88818882 FAX: 0086-576-88128822 E-Mail: wang@sanseikolaser.com www.sanseikolaser.com



Facebook



MZP1610

智能双头异步震动刀切割机

Intelligent Asynchronous Dual-Heads Oscillating Knife Cutting Machine

性能卓越，值得信赖 Performance & Reliability

同时拥有高品质高速切割速度，是自动化的最佳选择。

Perfect quality and considerable cutting speed are the result of a solid, accurate mechanic engineering and are the best options for automation.

满足鞋类和皮革制品的高品质切割需求。

Fully meet the requirements for the footwear and leather goods cutting.



SMART CUTTING & SOLUTIONS
智慧切割及解决方案

技术特征 Technical Parameters

机器型号 Model	MZP1610
切割面积 Cutting area	1600 X 1000mm
切割速度 Cutting Speed	80m/min (最快 Max)
加速度 Acceleration	1.0g
处理材料的厚度 (标准刀头) Thickness (Standard knife)	PU 25mm(切割 Max cutting); PU 16mm (冲孔 Max Punching)
冲孔频率 Punching Frequency	250 / min
抽真空功率 Vacuum Power Range	7.5 Kw
工作电源 Power	AC 220V, 50HZ / 60HZ

产品特点 Product Features

- 1-双头异步切割系统：实现混合排料加工。两个刀头同时独立切割不同的图形，提高材料利用率。特别适合鞋厂、箱包皮具厂等的皮革切割。
1.Asynchronous double heads cutting system, mix nesting & cutting. Double knife heads could cut different patterns independently, and improve the material utilization. Especially suiting shoes factory, suitcase factory and other leather material cutting.
- 2-高清投影定位系统：精确预定定位面料加工位置，避免浪费。
2.HD projection location system: The cutting patterns are projected on the surface of the material to avoid the waste.
- 3-配备自动送料工作台：通过高精度的系统进行调节，完成在工作过程中对材料的自动传输功能，可以大量节省放料时间，提高工作效率。是卷材大批量材料加工的最佳选择。
3.Auto-Feeding system: Be equipped with auto feeding conveyor system, along with the precise control adjustment system, it can automatically feed the materials, which will dramatically reduce time and labor of material feeding, so the work efficiency will be greatly enhanced. This model is the best choice for the roll batch material processing.
- 4- 双桌面工作，可以降低排版时的等待时间。
4.Double table to reduce the waiting time of type setting.
- 5- 特殊吸附平台设备，可保证材料的平整度，切割尺寸不变。
5.Special platform that can adsorb materials, which ensures the flatness of the material, and the high precision of the cutting size.
- 6-手动、自动排版。节省材料、模具、人工，告别低效率、低质量、高成本。
6.Manual and automatic typesetting choices. Saving material, mold and labor, say no to the low efficiency, low quality and the high cost.

应用行业 Applicable Industry

鞋业、纺织业、汽车内饰、家具、泡沫、建筑材料、包装业等。特别适合不同鞋类制品（皮类、PU、运动鞋、中底加工、大地加工）和皮革制品（箱包类、皮带、汽车椅套）。
Footwear, fabrics, automotive interiors, furniture, foam, building components, packaging, etc. Especially suitable for different types of footwear and leather goods.

适用于材料 Material & Application

通用切割网布，超织、PU、TPU、EVA、中底板、灰板、皮大底等加工。
Universally used to cut mesh fabric, ultra-woven, PU, TPU, EVA, middle and low plate, grey board, leather and other materials.



台州三屹精工机电有限公司

Taizhou Sanseiko Mechanical & Electrical Co., Ltd.

地址：浙江省台州市椒江区滨海工业区海丰路2229号 ADD: NO.2229 HAIFENG RD, BINHAI JIAOJIANG TAIZHOU ZHEJIANG CHINA
TEL: 0086-576-88818882 FAX: 0086-576-88128822 E-Mail: wang@sanseikolaser.com www.sanseikolaser.com



Facebook



QZ1625

智能震动刀切割打样机

Intelligent Gasket Oscillating Knife Cutting Table Machine



SMART CUTTING & SOLUTIONS
智慧切割及解决方案

技术特征 Technical Parameters

机器型号 Model	QZ1625
切割面积 Cutting area	1600 X 2500mm
切割速度 Cutting Speed	100 - 1200 mm/s
切割厚度 Cutting thickness	0.1 - 45 mm
加速度 Acceleration	1g
冲孔频率 Punching Frequency	250 / min
抽真空功率 Vacuum Power Range	7.5 Kw
支持文件 Support file formats	PLT, AI, DXF, DST, BMP, GIF, JPG, TIF.
电源 Power Supply	AC220V±10%, 50/ 60HZ

产品特点 Product Features

Different size can be made accordingly. 机器切割面积，可根据用户需求定制。



- 1 一体式铝平台。运用蜂窝的构成原理，坚固、防腐、耐用、吸声、隔热。
All in one aluminum platform. Applied with the composing principle of honeycomb, the platform is firm, antiseptic, durable, sound absorbing and heat insulated.
- 2 焊接式牢固机架。机架采用焊接结构，稳定性高，防止切割过程中因震动产生偏差。
Welded Rack. Rack adopts welded structure, high stability, preventing the deviation due to vibration deviation during the cutting process.
- 3 齿条丝杆。采用直线导轨作为传动轨道，保证机器高速运转且精度高。
Rack screw. Using linear guide as the transmission track to ensure the high-speed operation and the high precision of the machine.
- 4 特殊吸附材料平台，保证材料的平整，切割时尺寸不变。
Special platform that can adsorb material, which ensures the flatness of the materials, and the high precision of the cutting size.

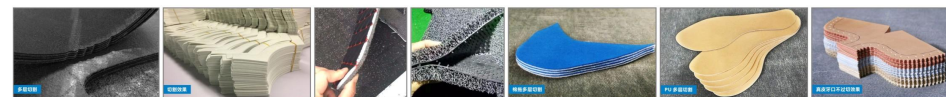
适用于材料 Material & Application

瓦楞纸、卡纸、白纸板、灰纸板、不干胶、PVC胶板、KT板、人造革、皮革、垫片、海绵、预浸料、布料、亚克力、蜂窝板纤维板、环氧树脂板、有机玻璃、汽车脚垫、纤维复合材料等柔性材料
Corrugated paper, cardboard, paperboard, adhesive sticker, PVC plate, PU, leather, sponge, prepreg, textile, acrylic, honey comb plate, epoxy resin, plexiglass, car foot mat, fibrous composite and other flexible materials.

应用行业 Applicable Industry



样品展示 Sample



台州三屹精工机电有限公司

Taizhou Sanseiko Mechanical & Electrical Co., Ltd.

地址：浙江省台州市椒江区滨海工业区海丰路2229号
TEL: 0086-576-88818882 FAX: 0086-576-88128822 E-Mail: wang@sanseikolaser.com www.sanseikolaser.com



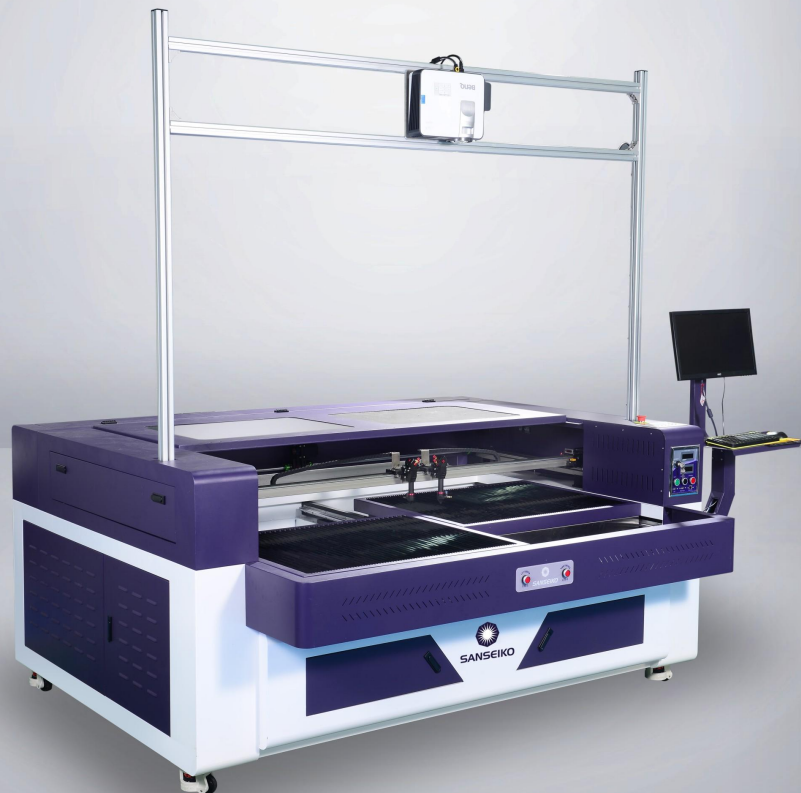
Facebook



XJH1610-P

全自动AB双平台交换式鞋面镂空激光切割机

Auto Double Alternate-Platform Hollowed-out Vamp Laser Engraving & Cutting Machine



SMART CUTTING & SOLUTIONS
智慧切割及解决方案

技术特征 Technical Parameters

机器型号 Model	XJH1610-P
激光类型 Laser Type:	Sealed Co2 glass laser tube, 80W / 100W / 130W / 150W
切割面积 Cutting Area:	1600mm*1000mm (800*500mm each platform)
标刻速度 Engraving Speed:	1-60000mm/min
重复标刻精度 Resetting positioning accuracy:	±0.01mm
工作平台 Worktable:	AB双平台 / AB Double Table
制冷方式 Cooling Mode:	水冷 Water Cooling
支持文件 Supported File:	PLT, AI, DXF, DST, BMP, JPG (etc)
制图软件 Compatible Software:	CorelDraw, AutoCAD, Photoshop
电源 Power	AC 220V±10%, 50 / 60Hz
证书 Certification:	CE

*工作面积可根据用户需求定制。 Different sizes of cutting area can be made accordingly.

产品特点 Product Features

- 1-AB双平台:** 全自动前后自行换位, 边切割边上料, 节省人工;
1.AB Double Table: Auto moving front & back, cutting and putting the material on the table at the same time, to improve the efficiency and save the labor cost.
- 2-直线导轨:** 摩擦小, 适合高速运行, 且长时间维持高精度定位;
2.Inear Guide Rail: Low friction, suiting the high speed running of the machine, while keeping position with high precision;
- 3-激光头:** 采用铝压铸工艺, 保证了切割的精确度;
3. Laser head: Adopt aluminum investment casting, NO shake, keep cutting with high precise;
- 4-工作状态提示灯:** 时时显示机器运行状态, 便于操作人员远处直观查看。
4. Working status indicator light: Always displaying the machine running state, and is convenient for the operator to see from a distance.

适用于材料 Material & Application

鞋材、布料、皮革、裘皮雕花、木制品、竹制品、亚克力、PVC 板材等非金属材料。
Shoe material, textile, Leather, Wool fabric, wood, Acrylic, PVC plate and other non-metal materials.



台州三屹精工机电有限公司

Taizhou Sanseiko Mechanical & Electrical Co., Ltd.

地址: 浙江省台州市椒江区滨海工业区海丰路2229号 ADD: NO.2229 HAIFENG RD, BINHAI JIAOJIANG TAIZHOU ZHEJIANG CHINA
TEL: 0086-576-88818882 FAX: 0086-576-88128822 E-Mail: wang@sanseikolaser.com www.sanseikolaser.com



Facebook



FX12090

飞织鞋面智能投影定位激光切割机
Flying Shoe Vamp Super Smart Projection Laser
Cutting Machine

高清投影定位系统：精确预定面料加工位置，避免浪费。
The engraving pattern projected through the high-definition projector on the surface of material



SMART CUTTING & SOLUTIONS
智慧切割及解决方案

技术特征 Technical Parameters

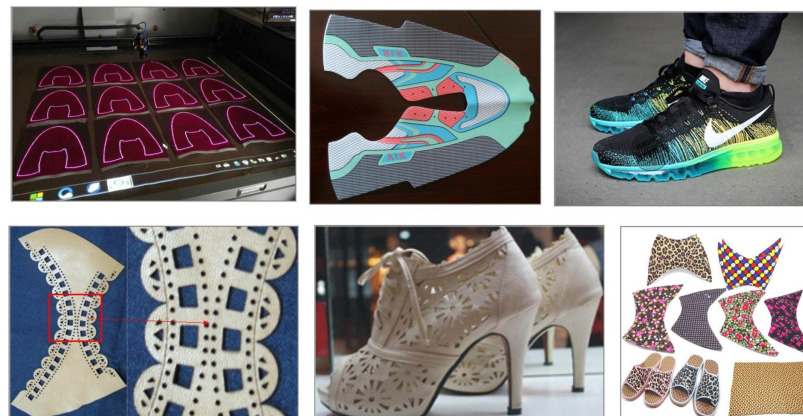
机器型号 Model	FX12090 / FX10060
激光类型 Laser Type:	Sealed Co2 glass laser tube 80W / 100W / 130W/150W
工作面积 Cutting Area:	1200*900mm / 1000*600mm
标刻速度 Engraving Speed:	1-60000mm/min
激光头 Laser head:	可选择：单头/双头 Option: single / Double
支持文件 Supported File:	PLT, AI, DXF, DST, BMP, JPGE (etc)
制图软件 Compatible Software:	CorelDraw, AutoCAD, Photoshop
电源 Power	AC 220V±10%, 50 / 60Hz
证书 Certification:	CE

产品特点 Product Features

- 1、智能优化切割路径，最大程度减少废料，加快切割速度，轻松实现大批量生产。
Intelligent optimization of cutting path, the maximum reduction of waste, speed up the cutting speed, easy to achieve mass production.
- 2、飞织鞋面激光切割机，一款转为鞋厂而打造设备。可用于布料、皮革、塑料、织唛等非金属材料切割雕刻。
Flying Shoe vamp with projector laser cutting machine is specially designed for shoe industry, weaving mark and other trademark products.

适用于材料 Material & Application

鞋材、布料、皮革、裘皮雕花、木制品、竹制品、亚克力、PVC 板材等非金属材料。
Shoe material, Cloth, Leather, Wool fabric, Wooden products, Acrylic, PVC plate other non-metal material.



台州三屹精工机电有限公司

Taizhou Sanseiko Mechanical & Electrical Co., Ltd.

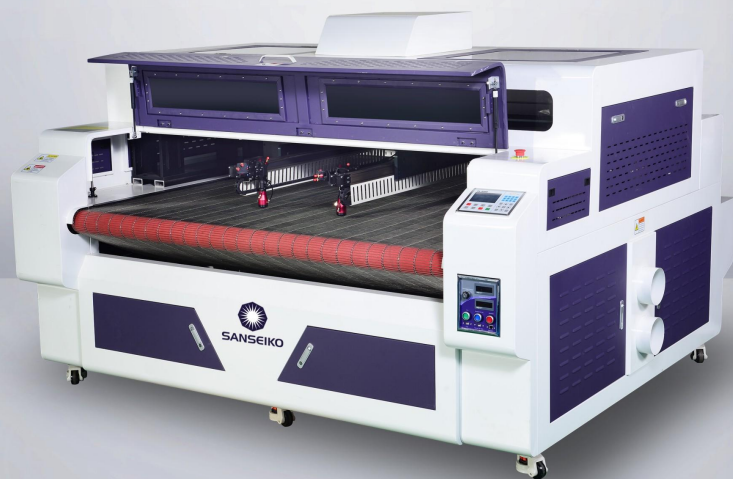
地址：浙江省台州市椒江区滨海工业区海丰路2229号 ADD:NO.2229 HAIFENG RD,BINHAI JIAOJIANG TAIZHOU ZHEJIANG CHINA
TEL：0086-576-88818882 FAX：0086-576-88128822 E-Mail:wang@sanseikolaser.com www.sanseikolaser.com



HP1610D-AF

智能双头混排混切异步激光切割机

Digital Dual Heads Laser Cutting Machine,
Mixed Typesetting & Mixed Cutting System



设备参数 Technical Parameter

机器型号 Model	HP1610D-AF
激光功率 Laser Power	玻璃管封离CO2激光器 / Sealed CO2 Laser Tube *2pcs, 80W/100W/130W/150W
切割面积 Working Area	1600 x 1000mm
冷却系统 Cooling System	工业级别、恒温冷水循环系统 / High Precision Industrial Water Chiller
切割速度 Cutting Speed:	10-500mm
支持文件 Supported File	PLT、AI、DXF、DST、BMP、JPGE (etc)

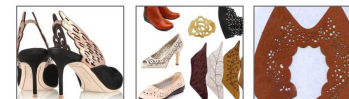
注：切割尺寸,可根据客户需求定制 Different sizes can be made accordingly.



SMART CUTTING & SOLUTIONS
智慧切割及解决方案

适用于柔性面料 Material & Application

适用于制衣、商标、服装辅料、制鞋、毛绒玩具、布艺玩具、箱包、清洁工具、印刷包装等行业。
Suitable for: Synthetic leather and leatherette footwear, Leather Shoes, Textile & Garment, Soft Toys, Home Textile, Leather Bag, etc.



机器特征 Machine Features



- 1.混合排版和混合切割数字激光切割系统。
1.Mixed typesetting and mixed cutting digital laser cutting system.
- 2.双激光头独立运行，可以同时处理不同的图形。
2.Dual laser heads work respectively, and they can process different patterns simultaneously.
- 3.混合排版多模式与自动嵌套软件，简单的操作程序，极大地提高了材料利用率。
3.Mixed typesetting in multi patterns and autonesting software, simplified operation procedures and the maximal improvement of the material utilization.
- 4.新款适合高精度切割激光头，运用铝熔铸工艺，达到航空级别品质
4.Installed with laser heads that have high precision, adopting aluminum investment casting to achieve aviation quality.
- 5.自动送料功能。
5. Automatic feeding.
- 6.先进的运动控制系统和专利设计结构，高品质的激光切割、打孔、高速雕刻。
6.The advanced multi-heads digital control system, unique advanced software algorithms and one-button operation extremely enhance the efficiency of cutting mixed-cutting patterns.
- 7.先进的多头数字控制系统，独特的高级软件算法，一键式操作，最大限度地提高了混合切割图案的工艺效率。
7.Advanced operation control system and our patent designed structure, high quality in the laser cutting, hollowing and high-speed engraving.

智能数字化混排混切系统 Digital Mixed typesetting & Mixed cutting system

1. 混合排版系统 Mixed Typesetting

利用国内先进的专用排版软件，对多种不同大小的图形按照指定需求的加工数量，进行全自动混合排版。
With the home advanced and specialized typesetting software, the different sized patterns can be composed automatically according to the required quantity.
排版软件是基于尖端科技与精密运算法则，保证最优化排版效果。
Typesetting software is based on advanced technology and high precise programming and algorithms, which ensures the best typesetting effect.
*可对多种不同大小图形在指定幅面内以最省材的方式混合排版，最大化材料利用率。
Make the utilization most efficient.
简化操作流程，排版更省时。
Simplify operation procedure, and saving time in typesetting.

2. 混合切割系统 Mixed Cutting

双激光头独立运行切割打孔，可同时加工不同的图形。
Both heads work respectively during cutting and punching, which makes it possible to proceed different patterns simultaneously.
*先进的运动控制+专利结构设计，在高速状态下完成高品质的激光穿孔、划线、切割等工艺。
Advanced motion control system & patent design structure, accomplish high-qualified laser punching, lineation and cutting technics under high moving speed.
同专业软件公司开发的多头智能控制系统，独特先进的软件算法，一键操作。将混合切割图形的加工效率提升到最大化。
Multi-heads digital control system with proprietary intellectual property rights, unique advanced software algorithms, one-touch operation, maximally improves the process efficiency for mixed cutting patterns.
加工时间大大缩短，效率较普通双头切割设备大大提高。
Processing time is greatly shortened and efficiency is highly improved compared with normal dual laser heads equipment.
双头混合切割打孔，按照各自设计好的路径，独立运行。
Mixed cutting / punching, both laser heads process at their own path simultaneously.

台州三屹精工机电有限公司

Taizhou Sanseiko Mechanical & Electrical Co.,Ltd.

地址：浙江省台州市椒江区滨海工业区块海丰路2229号 ADD:NO.2229 HAIFENG RD,BINHAI JIAOJIANG TAIZHOU ZHEJIANG CHINA
TEL：0086-576-88818882 FAX：0086-576-88128822 E-Mial: wang@sanseikolaser.com www.sanseikolaser.com





HQ-1610-AF

智能双头异步激光切割机

Intelligent Asynchronous Dual-Heads Laser Cutting Machine



SMART CUTTING & SOLUTIONS
智慧切割及解决方案

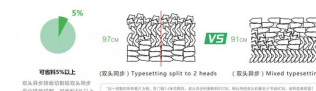
技术特征 Technical Parameters

机器型号 Model	HQ-1610-AF
激光类型 Laser Type:	Sealed Co2 glass laser tube 100W / 130W/150W
切割面积 Cutting Area:	1600mm*1000mm
标刻速度 Engraving Speed:	1-60000mm/min
重复标刻精度 Resetting positioning accuracy:	±0.01mm
工作台 Worktable:	自动送料 Auto-Feeding Material System (Convery Table)
制冷方式 Cooling Mode:	水冷 Water Cooling
支持文件 Supported File:	PLT, AI, DXF, DST, BMP, JPG (etc)
制图软件 Compatible Software:	CorelDraw, AutoCAD, Photoshop
电源 Power	AC 220V±10%, 50 / 60Hz
证书 Certification:	CE

*工作面积可根据用户需求定制。 Different sizes of cutting area can be made accordingly.

产品特点 Product Features

- 1-双头异步激光切割系统，实现混合排料加工。两个激光头同时独立切割不同的图形，提高材料利用率，特别适合鞋厂、箱包皮具厂、玩具厂。
1.Asynchronous double heads cutting system, mix nesting & cutting. Double laser heads could cut different patterns independently, and improve the material utilization, especially suiting shoes factory, suitcase factory and toy factory.
- 2-节省材料、模具、人工，告别低效率、低质量、高成本。
2.Saving material, mold and labor, say no to the low efficiency, low quality and the high cost.



*Comparing with the normal double heads, asynchronous dual heads saves more material (6%-15% material saving).

应用行业 Applicable Industry

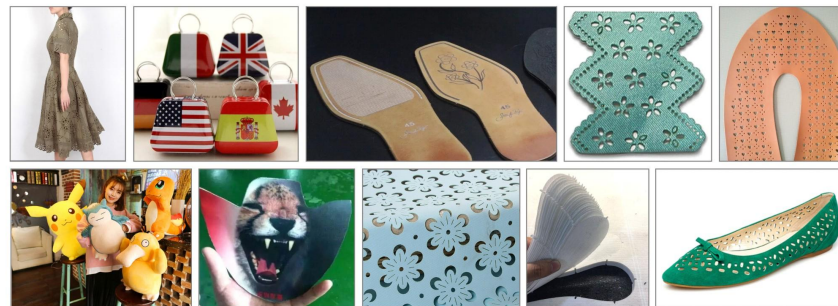
制鞋、箱包、皮具、玩具等。

Shoes pattern cutting, fabrics cutting, bags & suitcase, leather products, toys pattern cutting, etc.

适用于材料 Material & Application

网布、绒面革、合成革、布料、毛料、棉麻、无纺布、化纤等。

Mesh, suede, synthetic leather, linen, non-wovens, chemical fiber etc.



台州三屹精工机电有限公司

Taizhou Sanseiko Mechanical & Electrical Co., Ltd.

地址：浙江省台州市椒江区滨海工业区海丰路2229号 ADD: NO.2229 HAIFENG RD, BINHAI JIAOJIANG TAIZHOU ZHEJIANG CHINA

TEL: 0086-576-88818882 FAX: 0086-576-88128822 E-Mail: wang@sanseikolaser.com www.sanseikolaser.com



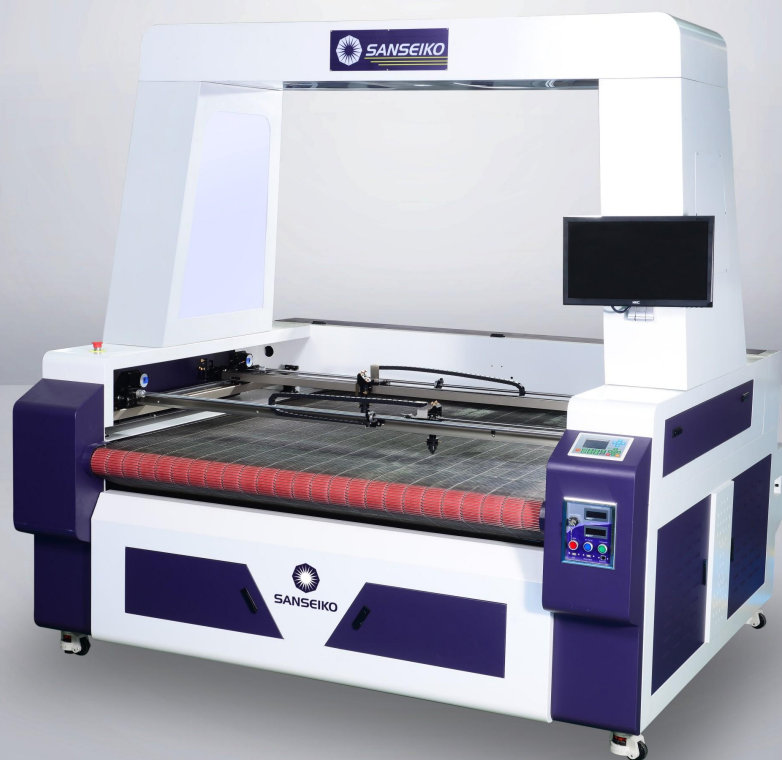
Facebook



HQ-1610-V-AF

智能全景摄像定位双头异步激光切割机

Intelligent Vision Camera Position Asynchronous
Dual-Heads Automatic Laser Cutting Machine



SMART CUTTING & SOLUTIONS
智慧切割及解决方案

技术特征 Technical Parameters

机器型号 Model	HQ-1610-V-AF
激光类型 Laser Type:	Sealed Co2 glass laser tube 100W / 130W/150W
切割面积 Cutting Area:	1600mm*1000mm
标刻速度 Engraving Speed:	1-60000mm/min
重复标刻精度 Resetting positioning accuracy:	±0.01mm
工作平台 Worktable:	自动送料 Auto-Feeding Material System (Convery Table)
制冷方式 Cooling Mode:	水冷 Water Cooling
支持文件 Supported File:	PLT, AI, DXF, DST, BMP, JPG (etc)
制图软件 Compatible Software:	CorelDraw, AutoCAD, Photoshop
电源 Power	AC 220V±10%, 50 / 60Hz
证书 Certification:	CE

*工作面积可根据用户需求定制。 Different sizes of cutting area can be made accordingly.

产品特点 Product Features

- 智能全景摄像头视觉系统**：针对较大图案的识别实现精确识别，不同形状的图案实现同时识别，系统能自动生成切割路径，操作简单。
1.Intelligent vision camera position system. Precise identification of large sized patterns as well as simultaneous recognition for different shapes of images. The system can automatically generate cutting path, which simplifies the operation.
- 双头异步激光切割系统**，实现混合排料加工：两个激光头同时独立切割不同的图形，提高材料利用率，特别适合鞋厂、箱包皮具厂、玩具厂。
2.Asynchronous double heads cutting system, mix nesting & cutting. Double laser heads could cut aifferent different patterns independently to improve the material utilization, especially suitable for shoes factory, suitcase factory and toy factory.
- 自动化送料系统**：通过软件自动设定工作平台的精确移动，实现在下一个工作版面进行切割，最大限度避免材料浪费，完成自动化的连续加工，从而大量节省了放料时间，工作效率明显提高。
3.Setting the precise movement of worktable by software to realize continuous cutting on the next cutting area, and maximully avoiding the material waste; processing automatically and continuously; saving a lot of time and labor.
- 节省材料、模具、人工，告别低效率、低质量、高成本。**
4.Save material, mold and labor, say no to the low efficiency, low quality and the high cost.



*Comparing with the normal double heads, asynchronous dual heads saves more material (6%-15% material saving).

应用行业 Applicable Industry

印花服装，印花鞋面，3D飞织鞋面，编织图案，绣花商标，热转印
Printing garments, printing shoes upper, 3D fly weaving vamp, weaving pattern, embroidered trademark, sublimation.

适用于材料 Material & Application

网布、绒面革、合成革、布料、毛料、棉麻、无纺布、化纤等。
Mesh, suede, synthetic leather, linen, non-wovens, chemical fiber etc.



台州三屹精工机电有限公司

Taizhou Sanseiko Mechanical & Electrical Co.,Ltd.

地址：浙江省台州市椒江区滨海工业区海丰路2229号 ADD:NO.2229 HAIFENG RD,BINHAI JIAOJIANG TAIZHOU ZHEJIANG CHINA
TEL：0086-576-88818882 FAX：0086-576-88128822 E-Mail: wang@sanseikolaser.com www.sanseikolaser.com



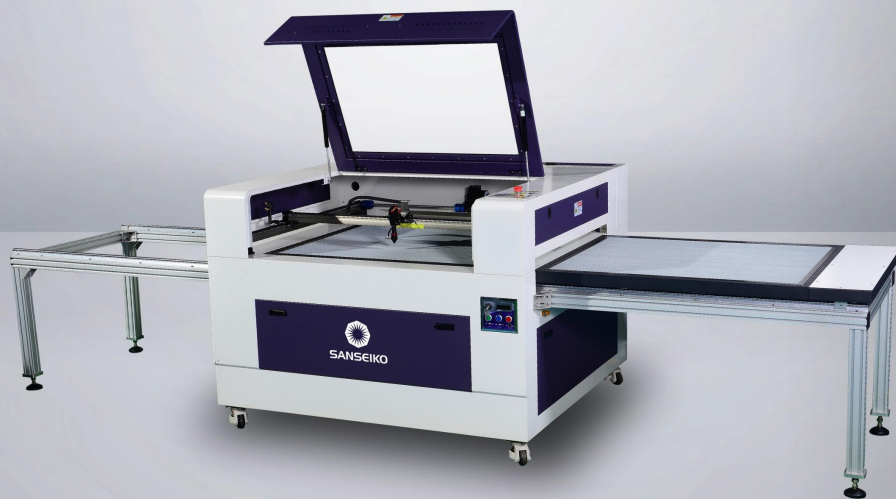
Facebook



JH10080

非金属自动交换双平台激光雕刻&切割机

Non-Metal Material Auto Shifting Dual-Table Laser
Engraving & Cutting Machine-JH Series



SMART CUTTING & SOLUTIONS
智慧切割及解决方案

技术特征 Technical Parameters

机器型号 Model	JH10080
激光类型 Laser Type:	Sealed Co2 glass laser tube 60W / 80W / 100W / 130W/150W
工作面积 Cutting Area:	1000*800mm
工作平台 Working Table:	双工作平台 (自动互移) / Double table interaction(Auto Moving)
标刻速度 Engraving Speed:	1-60000mm/min
重复标刻精度 Resetting positioning accuracy:	±0.01mm
制冷方式 Cooling Mode:	水冷 Water Cooling
支持文件 Supported File:	PLT、AI、DXF、DST、BMP、JPG(etc)
制图软件 Compatible Software:	CorelDraw、AutoCAD、Photoshop
电源 Power	AC 220V±10%, 50 / 60Hz
工作环境 Working Environment	Temperature:0-30°C; Humidity:30-80%(No condensate water)
证书 Certification:	CE

Different size can be made accordingly.

产品特点 Product Features

双工作面互动系列使机械的运动性能充分的得以发挥，左右网板自动切换，同时进行切割和上料。节约了生产时间，提高了工作效率，节约了生产成本，满足客户的需求，是客户批量化加工生产的最佳选择。

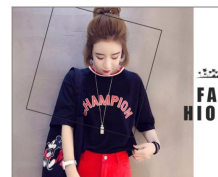
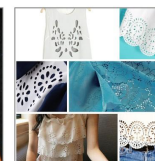
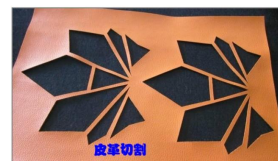
Double table interaction series machines optimize the mechanic motion performance of the machine, the automatic interaction of the double tables provides auto feeding and cutting in the same time, can reduce time and improve the efficiency. This cutter provides two working tables, can switch from left to right, also can cut materials during feeding at the same time, which saves the feeding time greatly, thus enhanced the working efficiency. High quality equipment, your best choice for mass production.

应用行业 Applicable Industry

服装、皮革、布制玩具、电脑绣花裁剪、贴布绣花、模型、工艺品、广告、装饰、包装印刷等众多行业。
Garment, leather, cloth toys, embroidery patch cutting, mould, arts and crafts, advertising, decoration, packaging print and so on.

适用于材料 Material & Application

布料、皮革、毛料、纸、塑料、橡胶、PVC板、木制品、有机玻璃、环氧树脂、亚克力、水晶、瓷砖。
Cloth, leather, wool, paper, plastic, rubber, PVC plate, wood, plexiglass, epoxy resin, acrylic, crystal, tile and so on.



台州三屹精工机电有限公司

Taizhou Sanseiko Mechanical & Electrical Co., Ltd.

地址：浙江省台州市椒江区滨海工业区海丰路2229号 ADD: NO.2229 HAIFENG RD, BINHAI JIAOJIANG TAIZHOU ZHEJIANG CHINA
TEL: 0086-576-88818882 FAX: 0086-576-88128822 E-Mail: wang@sanseikolaser.com www.sanseikolaser.com



Facebook

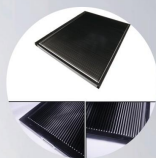


SANSEIKO
三屹精工

S14090

非金属激光雕刻&切割机-单头系列

Non-Metal Material Laser Engraving&Cutting
Machine-Single Head Series



可选项：刀条工作平台
Option: Knife / Strip Worktable



SANSEIKO
三屹精工

SMART CUTTING & SOLUTIONS
智慧切割及解决方案

技术特征 Technical Parameters

机器型号 Model	S6040 / S9060 / S10080 / S12090 / S14090 / S1610
激光类型 Laser Type:	Sealed Co2 glass laser tube 60W / 80W / 100W / 130W
标刻面积 Cutting Area:	600*400 / 900*600 / 1000*800 / 1200*900 / 1400*900mm/1600*1000mm
标刻速度 Engraving Speed:	1-60000mm/min
重复标刻精度 Resetting positioning accuracy:	±0.01mm
制冷方式 Cooling Mode:	水冷 Water Cooling
支持文件 Supported File:	PLT, AI, DXF, DST, BMP, JPGE (etc)
制图软件 Compatible Software:	CorelDraw, AutoCAD, Photoshop
电源 Power	AC 220V±10%, 50 / 60Hz
工作环境 Working Environment	Temperature:0-30°C; Humidity:30-80%(No condensate water)
证书 Certification:	CE

产品特点 Product Features

该系列机技术成熟，切割精确、速度快，操作系统人性化，数字化高速处理技术可实现电脑完全脱机操作，外接U盘数据自动读取功能，同时系统支持自动储存记忆功能；激光功率和切割速度可调节控制，具备多种路径优化功能，整机性能稳定可靠、性价比高，是非金属材料切割的首选。

Proven techniques, high cutting precision and high speed are the major features of this series machines, together with the human friendly operating system, the superiority of the machines are embodied. DSP high speed processing technique realizes operation without computer control. With USB memory stick data reader reading and saving function, the system can save and memorize data automatically; laser power and cutting speed are adjustable. It has multiple route optimization functions. The machine is stable and reliable. It is the best choice in non-metal material cutting industries.

应用行业 Applicable Industry

服装、皮革、布制玩具、电脑绣花裁剪、贴布绣花、模型、工艺品、广告、装饰、包装印刷等众多行业。
Garment, leather, textile toys, embroidery patch cutting, mould, arts and crafts, advertising, decoration, packaging print and so on.

适用于材料 Material & Application

布料、皮革、毛料、纸、塑料、橡胶、PVC板、木制品、有机玻璃、环氧树脂、亚克力、水晶、瓷砖。
textile, leather, wool, paper, plastic, rubber, PVC plate, wood, plexiglass, epoxy resin, acrylic, crystal, tile and so on.



台州三屹精工机电有限公司

Taizhou Sanseiko Mechanical & Electrical Co., Ltd.

地址：浙江省台州市椒江区滨海工业区海丰路2229号 ADD: NO.2229 HAIFENG RD, BINHAI JIAOJIANG TAIZHOU ZHEJIANG CHINA
TEL: 0086-576-88818882 FAX: 0086-576-88128822 E-Mail: wang@sanseikolaser.com www.sanseikolaser.com



Facebook



S1610D

非金属激光雕刻&切割机-双头系列

Non-Metal Material Laser Engraving&Cutting
Machine-Double Heads Series



SMART CUTTING & SOLUTIONS
智慧切割及解决方案

技术特征 Technical Parameters

机器型号 Model	S12090D / S1410D / S1610D / S1810D
激光类型 Laser Type:	Sealed Co2 glass laser tube 60W / 80W / 100W / 130W / 150W
标刻面积 Engraving Area:	1200*900 / 1400*1000 / 1600*1000 / 1800*1000mm
标刻速度 Engraving Speed:	1-60000mm/min
重复标刻精度 Resetting positioning accuracy:	±0.01mm
制冷方式 Cooling Mode:	水冷 Water Cooling
支持文件 Supported File:	PLT, AI, DXF, DST, BMP, JPG (etc)
制图软件 Compatible Software:	CorelDraw, AutoCAD, Photoshop
电源 Power	AC 220V±10%, 50 / 60Hz
工作环境 Working Environment	Temperature:0-30°C; Humidity:30-80%(No condensate water)
证书 Certification:	CE

产品特点 Product Features

双激光头同时工作，加倍提高工作效率，成熟稳定的数字化控制系统，简洁明了的人机对话界面、性能优越、稳定的动力驱动系统、高精度的运行轨道，使设备在工作过程中更显示出高效、节能、稳定、便捷的特点。

Double laser heads could work at the same time, double improve the work efficiency. It has stable and reliable digitalized control system, human-friendly operating panel, stable motion drive system with superior performance, high precision moving rails, all these make machines the features of high efficiency, energy conservation, stability and convenience during working.

应用行业 Applicable Industry

服装、皮革、布制玩具、电脑绣花裁剪、贴布绣花、模型、工艺品、广告、装饰、包装印刷等众多行业。

Garment, leather, cloth toys, embroidery patch cutting, mould, arts and crafts, advertising, decoration, packaging print and so on.

适用于材料 Material & Application

布料、皮革、毛料、纸、塑料、橡胶、PVC板、木制品、有机玻璃、环氧树脂、亚克力、水晶、瓷砖。

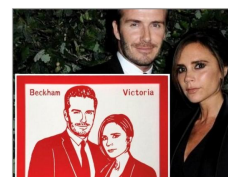
Cloth, leather, wool, paper, plastic, rubber, PVC plate, wood, plexiglass, epoxy resin, acrylic, crystal, tile and so on.



3D 木质模型



3D拼插模型 木质



台州三屹精工机电有限公司

Taizhou Sanseiko Mechanical & Electrical Co., Ltd.

地址：浙江省台州市椒江区滨海工业区海丰路2229号 ADD:NO.2229 HAIFENG RD,BINHAI JIAOJIANG TAIZHOU ZHEJIANG CHINA
TEL : 0086-576-88818882 FAX : 0086-576-88128822 E-Mail: wang@sanseikolaser.com www.sanseikolaser.com



Facebook



ME5030

迷你CO2激光雕刻机
Mini Co2 Laser Engraving Machine



SMART CUTTING & SOLUTIONS
智慧切割及解决方案

设备参数 Technical Parameters

机器型号 Model	ME5030
激光类型 Laser Type:	Sealed Co2 glass laser tube , 40W / 60W
标刻面积 Engraving Area:	500mm*300mm
标刻速度 Engraving Speed:	1-60000mm/min
重复标刻精度 Resetting positioning accuracy:	±0.01mm
工作平台 Worktable	上下升降平台/ Motorized up and down platform
制冷方式 Cooling Mode:	水冷 Water Cooling
电源 Power	AC 220V±10%, 50 - 60Hz
支持文件 Supported File:	PLT, AI, DXF, DST, BMP, JPG (etc)
制图软件 Compatible Software:	CorelDraw, AutoCAD, Photoshop
证书 Certification:	CE
选配 Option:	旋转装置/ Rotary Device

适用于材料 Material & Application

亚克力, 水晶, 玻璃, 皮革, 密度板, 纸张, 塑料, 有机玻璃, 胶合板, 橡胶, 石头, 木材等
Acrylic, Crystal, Glass, Leather, MDF, Paper, Plastic, Plexiglass, Plywood, Rubber, Stone, Wood



台州三屹精工机电有限公司

Taizhou Sanseiko Mechanical & Electrical Co., Ltd.

地址: 浙江省台州市椒江区滨海工业区海丰路2229号 ADD: NO.2229 HAI FENG RD, BINHAI JIAOJIANG TAIZHOU ZHEJIANG CHINA
TEL: 0086-576-88818882 FAX: 0086-576-88128822 E-Mail: wang@sanseikolaser.com www.sanseikolaser.com



Facebook



NC1625D-AF

全自动大幅面非金属激光裁床系列

Automatic Non-Metal Material Ultimate Laser Cutting Bed



SMART CUTTING & SOLUTIONS
智慧切割及解决方案

技术特征 Technical Parameters

机器型号 Model	NC1625-AF / NC1530-AF / NC1625D-AF / NC1530D-AF
激光类型 Laser Type:	Sealed Co2 glass laser tube 80W / 100W / 130W/150W
工作面积 Cutting Area:	1600*2500 / 1500*3000mm
激光头 Laser Head:	Optional: Single / Double
标刻速度 Engraving Speed:	1-60000mm/min
重复标刻精度 Resetting positioning accuracy:	±0.01mm
制冷方式 Cooling Mode:	水冷 Water Cooling
支持文件 Supported File:	PLT、AI、DXF、DST、BMP、JPG(etc)
制图软件 Compatible Software:	CorelDraw、AutoCAD、Photoshop
电源 Power	AC 220V±10%, 50 / 60Hz
工作环境 Working Environment	Temperature:0-30°C; Humidity:30-80%(No condensate water)
证书 Certification:	CE

Different size can be made accordingly. 机器切割面积, 可根据用户需求定制.

产品特点 Product Features

配备自动送料工作平台, 通过高精度的系统进行调节, 完成在工作过程中对材料的自动传输功能, 可以大量节省放料时间, 提高工作效率. 是卷材大批量材料加工的最佳选择.

This ultimate laser cutting bed is equipped with auto feeding conveyor system, along with the precise control adjustment system, it can automatically feed the materials, which will dramatically reduce time and labor for material feeding, so the work efficiency will be greatly enhanced. This model is the best choice for the roll batch material processing.

应用行业 Applicable Industry

服装、鞋业、家纺、电脑绣花裁剪、皮革、箱包、户外、车椅等众多行业.

Garment, shoe industry, home textiles, embroidery patch cutting, leather, Luggage, outdoors, automotive interiors and so on.

适用于材料 Material & Application

布料、皮革、毛料、纸、塑料、橡胶、PVC板、木制品、有机玻璃、环氧树脂、亚克力、水晶、瓷砖、textile, leather, wool, paper, plastic, rubber, PVC plate, wood, plexiglass, epoxy resin, acrylic, crystal, tile and so on.



台州三屹精工机电有限公司

Taizhou Sanseiko Mechanical & Electrical Co., Ltd.

地址: 浙江省台州市椒江区滨海工业区海丰路2229号 ADD: NO.2229 HAIFENG RD, BINHAI JIAOJIANG TAIZHOU ZHEJIANG CHINA
TEL: 0086-576-88818882 FAX: 0086-576-88128822 E-Mail: wang@sanseikolaser.com www.sanseikolaser.com



Facebook



SANSEIKO
三屹精工

FM20 / FM30

光纤打标机

Fiber Laser Marking
Machine



可选配 旋转装置
Option: Rotary Device



SANSEIKO
三屹精工

SMART CUTTING & SOLUTIONS
智慧切割及解决方案

设备参数 Technical Parameters

机器型号 Model	Fm20 / Fm30
标刻范围 Marking Area	110X110(Standard) / 220X220 / 300X300 mm
激光功率 Laser Power	10W / 20W(Standard) / 30W
激光频率 Laser Frequency	20-100KHZ
光速质量 Beam Quality	M2<1.5
标刻速度 Marking Speed	0-7000 mm/s
标刻深度 Marking Depth	0.01mm-0.7mm
最小线宽 Min line Width	0.01mm
重复定位精度 Repeat position accuracy	±0.003mm
电源供应 Power Supply	AC220V±10% 50/60HZ
软件 Software	Ezcad
Support file formats	PLT, AI, DXF, DST, BMP, GIF, JPG, TIF.

适用于材料 Material & Application

金属及多种非金属材料，高硬合金、氧化物、电镀、镀膜、ABS、环氧树脂、油墨、陶瓷、攻城塑料等。
Common metal (iron, copper, aluminum, zinc etc), special metal (gold, silver, titanium etc), Special surface treatment (plating, phosphating, anodizing of aluminum), metal oxide, ABS material



设备特征 Features

1. 机器低功率消耗，节能省电；
 2. 体积小，方便转运；
 3. 高电光转换率，免维护。
 4. 稳定性高，操作方便。
 5. 广泛应用：条形码标记，二维码，文字图形规则和不规则交易标记。
 6. 多重标记形式：飞行标记，行式打印机，旋转标记，多级标记。
 7. 深刻刻痕：铝材料上实现黑色标刻。
 8. 可根据客户需求定制。
1. Less power consumption, less than 500W.
 2. Small size, air-cooled, easy to carry and transport.
 3. High electro-optical conversion rate, maintenance free.
 4. High stability, easy to operate.
 5. Broad application: barcode marking, two-dimensional code, text graph regular and irregular transaction mark.
 6. Multiple Marking form: Flying Marking, Line Printer, Rotating Marking, Multistage Marking.
 7. Deep carved marking. Black marks on Al material.
 8. Can be customized according to customer demand.

台州三屹精工机电有限公司

Taizhou Sanseiko Mechanical & Electrical Co., Ltd.

地址：浙江省台州市椒江区滨海工业区海丰路2229号 ADD: NO.2229 HAI FENG RD, BINHAI JIAOJIANG TAIZHOU ZHEJIANG CHINA
TEL: 0086-576-88818882 FAX: 0086-576-88128822 E-Mail: wang@sanseikolaser.com www.sanseikolaser.com



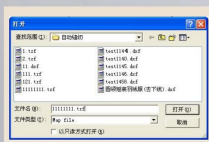
Facebook



SK9885-LC

全自动工业激光切割&模板缝纫一体机

Industrial Auto-Computerized Laser Cutting & Pattern Sewing Machine



强大的格式兼容性: dxf, dst, dsb, ai, plt, tzf 等, 均可识别。

High format compatibility: patterns with format dxf, dst, dsb, ai, plt, tzf etc. all can be identified.



Patterns can be edited easily and readed directly from USB



条码识别功能, 最高储存999种花样 patterns restored



点位及画图功能: 为下一道工序生产, 进行加工前的点位。
Mark Function: marking points for next sewing step



SMART CUTTING & SOLUTIONS
智慧切割及解决方案

产品特点 Product Features

- 1-No need skilled workers: 不用熟练工, 一般普工即可操作;
- 2-One machine can save three workers' work: 一台机器可节省员工3人以上;
- 3-Just put the cutting machine automatically after operation: 只需拜访裁片, 自动操作;
- 4-Process standards, quality and stability complicated process simple: 使工艺复杂的工序操作简单化

Model	Sewing Area	Max Speed rpm	Stitch length	Program Input	Foothook	Mid presser foot stroke	Needle	Max Deposited	Possible to identify the number of sample
SK-9885-LC	X no limit*Y800	2800	0.5~10mm	Pen drive/USB cable	2倍大旋梭 1.6倍大旋梭	EPROM内存	DPX5 9#X17#	999	999
SK-9895-LC	X no limit*Y950	2800	0.5~10mm	Pen drive/USB cable	2倍大旋梭 1.6倍大旋梭	EPROM内存	DPX5 9#X17#	999	999

机器特征 Features

1.全自动激光切割 Auto-Computerized Laser Cutting

模板缝纫后, 智能激光自动切割面料, 节省人工, 更加高效;
Unique auto computerized laser cutting after pattern sewing, save worker's work, more efficient.

2.简便易操作的大型彩色液晶触摸屏显示屏 Simple and easy to operate large color LCD touch screen

使用最先进的大型彩色液晶图显示和触摸屏操作屏, 全中文(或英文)操作界面所有功能一目了然。任何使用操作调整都可以在操作盘上简单进行。
Using the most advanced large-scale color LCD graphic display and touch screen operation, functions at a glance, make operating convenience.

3.一维扫描模板识别装置 One-dimensional scanning template identification equipment

本机可自动识别模板, 自动识别起点缝纫, 一键操作, 符合标准化生产流程。
Can automatically identify templates, automatic identification start sewing, one key operation, comply with the standardized production process.

4.X向无限缝制 X to the infinite sewing

长度X向可无限缝制, 不受限制。
Length X direction can be infinite and sewing, is not restricted.

5.编程简单方便, 可用U盘录入 Simple and convenient programming, available usb input

可通过上位软件直接使用服装CAD软件生成的DXF和PLT图形, 编程简单方便, 另外也可以通过插入U盘读取图形直接编程, 或用上位软件转换可运行程序。
Can be used directly by upper software service DXF and PLT graphics generated by the CAD software, become simple and convenient, also can be read by usb graphics programming.



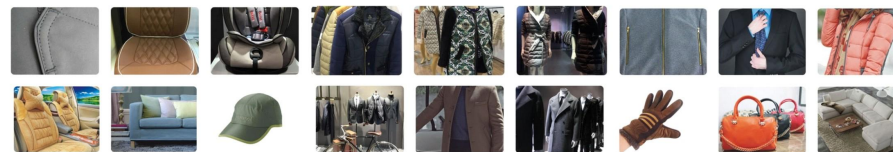
6.丝杆传动Screw guide module transmission mode

高精度、高速运转, 低噪音。 High precise, high speed operation, low noise.

应用行业 Applicable Industry

适用范围包括高级皮革服装, 皮鞋, 箱包, 沙发, 休闲布, 羽毛外套, 牛仔裤等的拼接。

Application covers the stitching of highgrade leather wear, leather shoes, bag & box, sofa, leisure cloth, feather coat, jean etc.



台州三屹精工机电有限公司

Taizhou Sanseiko Mechanical & Electrical Co., Ltd.

地址: 浙江省台州市椒江区滨海工业区海丰路2229号

TEL: 0086-576-88818882

FAX: 0086-576-88128822

ADD: NO.2229 HAIFENG RD, BINHAI JIAOJIANG TAIZHOU ZHEJIANG CHINA

E-Mail: wang@sanseikolaser.com

www.sanseikolaser.com



Facebook